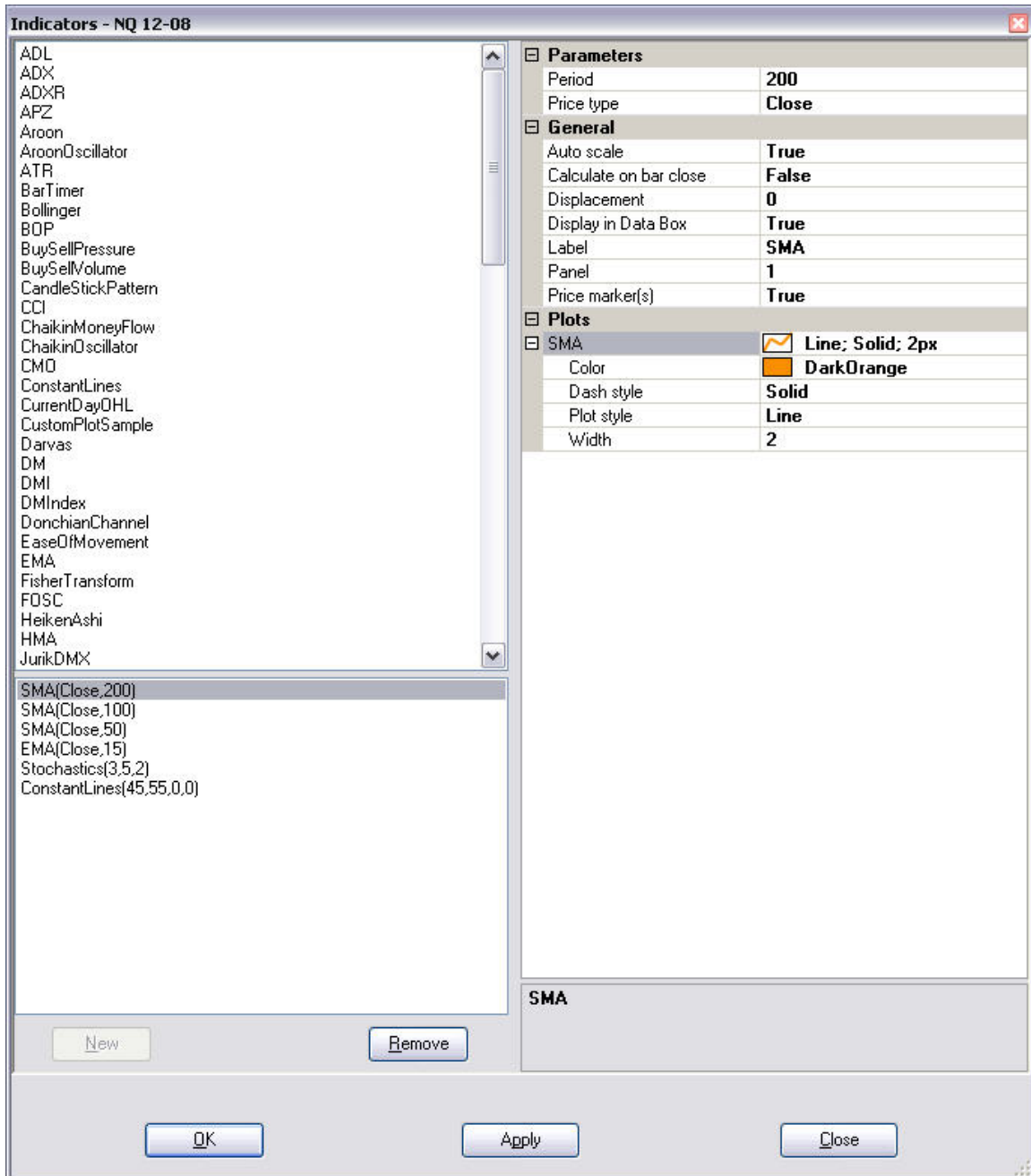


# NinjaTrader Chart and Indicator Setup for Top Dog Trading Foundations Course 1

Set up your **moving averages** like this. You can change the color and width to your personal liking. However make sure you set all 4 moving averages with the settings of:

Price Type: Close

Calculate on bar close: False

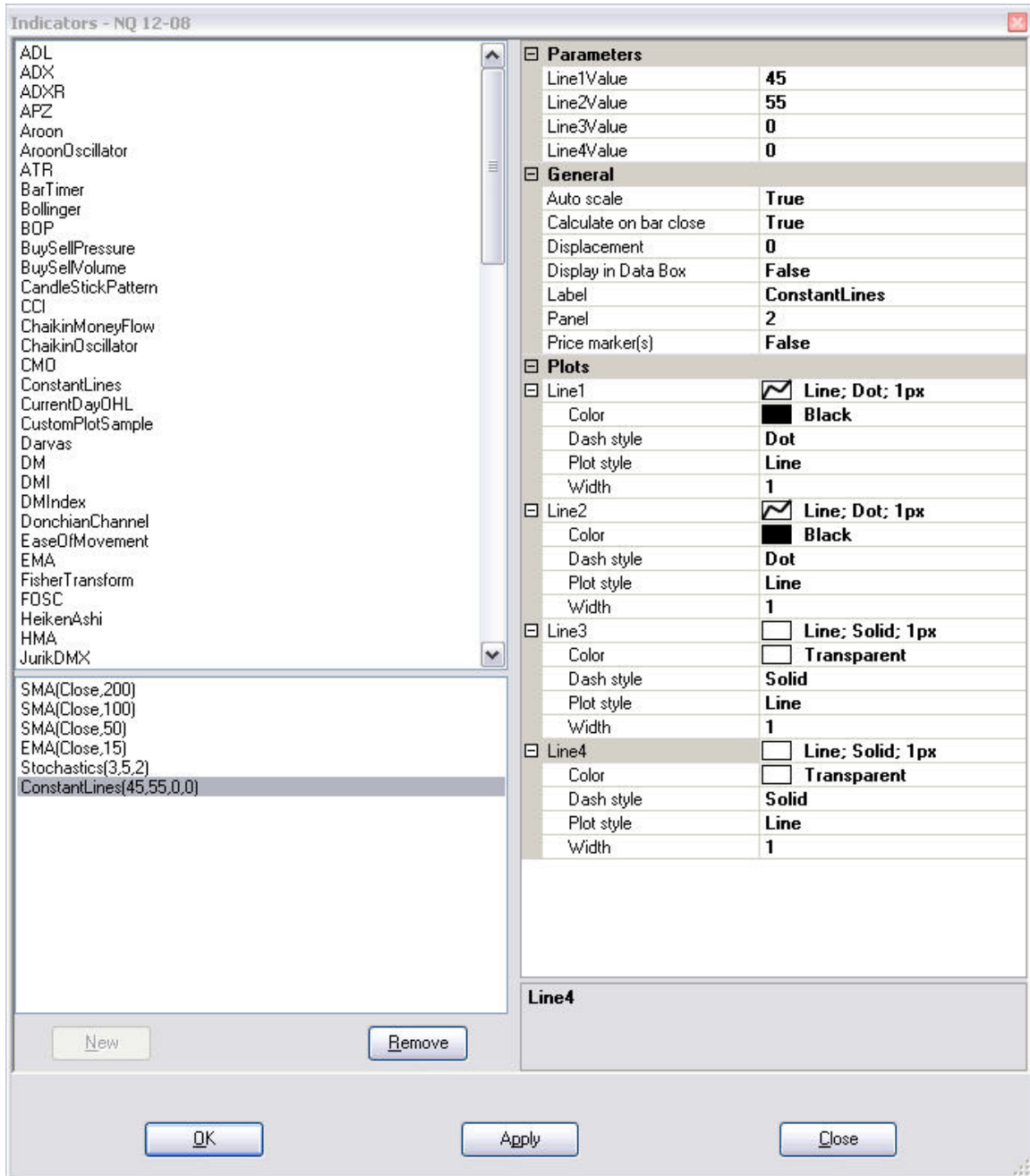


Set up your **stochastics** like this:

The screenshot shows the 'Indicators - ES 06-10' dialog box. On the left, a list of indicators is shown, with 'Stochastics(3,5,2)' selected. The right side of the dialog is divided into several sections: Parameters, General, Lines, and Plots. The Parameters section includes PeriodD (3), PeriodK (5), and Smooth (2). The General section includes Auto scale (False), Calculate on bar close (False), Displacement (0), Display in Data Box (True), Label (Stochastics), Panel (2), and Price marker(s) (True). The Lines section includes Lower and Upper lines, both with a value of 20 and 80 respectively, a dash style of Dot, and a width of 2. The Plots section includes D and K lines, both with a dash style of Solid and a width of 2 and 1 respectively. The D line is blue, and the K line is black. At the bottom, there are buttons for 'New', 'Remove', 'OK', 'Apply', and 'Close'.

Section	Property	Value
Parameters	PeriodD	3
	PeriodK	5
	Smooth	2
General	Auto scale	False
	Calculate on bar close	False
	Displacement	0
	Display in Data Box	True
	Label	Stochastics
	Panel	2
	Price marker(s)	True
Lines	Lower	20
	Color	Black
	Dash style	Dot
	Value	20
	Width	2
	Upper	80
Color	Black	
Dash style	Dot	
Value	80	
Width	2	
Plots	D	Line; Solid; 2px
	Color	Blue
	Dash style	Solid
	Plot style	Line
	Width	2
	K	Line; Solid; 1px
Color	Black	
Dash style	Solid	
Plot style	Line	
Width	1	

Use the “**constant lines**” indicator to add lines at 45 and 55 on the stochastics pane.



Your chart should look like this when you're done.

